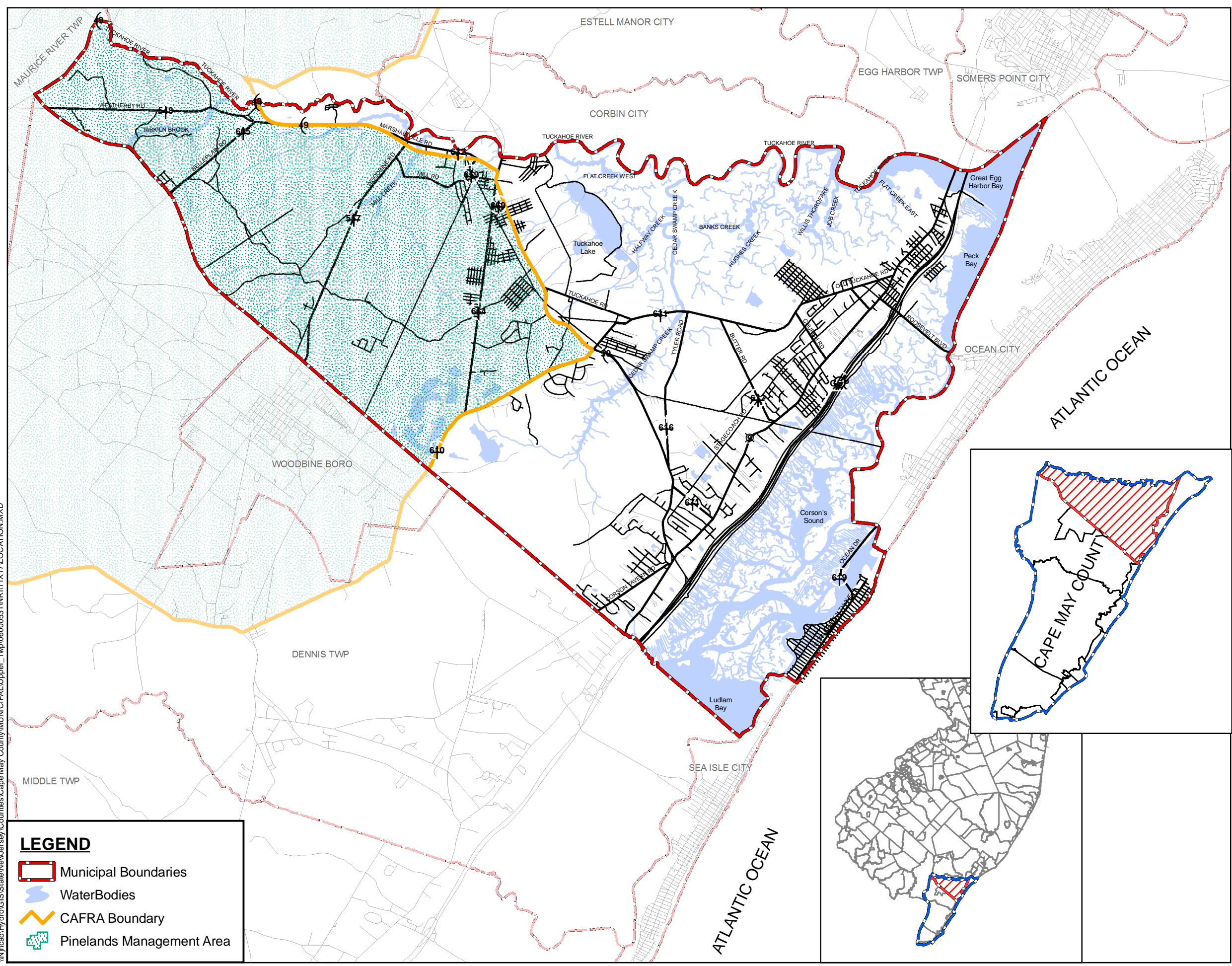


\\njcad\Hydro\GIS\State\NewJersey\Cape May County\MUNICIPAL\Upper\_Twp\060000531\NR11\1X17\LOCATION.MXD



**LEGEND**

- Municipal Boundaries
- WaterBodies
- CAFRA Boundary
- Pinelands Management Area

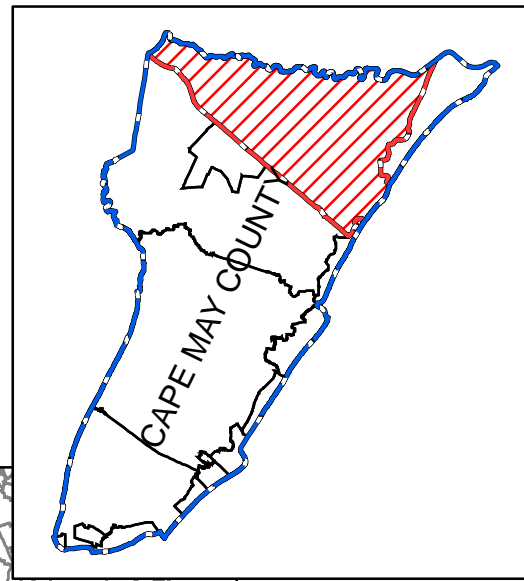
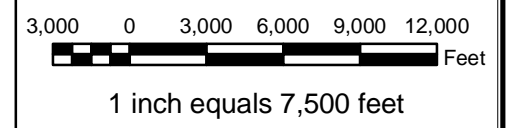
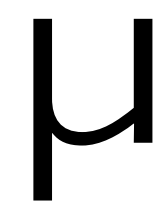
FIGURE 1

# LOCATION MAP

TOWNSHIP OF UPPER

CAPE MAY COUNTY, NEW JERSEY

SEPTEMBER 2006



DIGITAL SPATIAL DATA SOURCES:

- CAPE MAY COUNTY GEOGRAPHIC INFORMATION SYSTEM
- NEW JERSEY DEPARTMENT OF COMMUNITY AFFAIRS, OFFICE OF SMART GROWTH
- NEW JERSEY DEPARTMENT OF ENVIRONMENTAL PROTECTION, BUREAU OF GEOGRAPHIC INFORMATION
- UNITED STATES DEPARTMENT OF AGRICULTURE, NATURAL RESOURCES CONSERVATION SERVICES
- NEW JERSEY OFFICE OF INFORMATION TECHNOLOGY, OFFICE OF GIS





\\njcad\Hydro\GIS\State\NewJersey\Cape May County\MUNICIPAL\Upper\_Twp\06000531\NR111X17\LANDUS.MXD

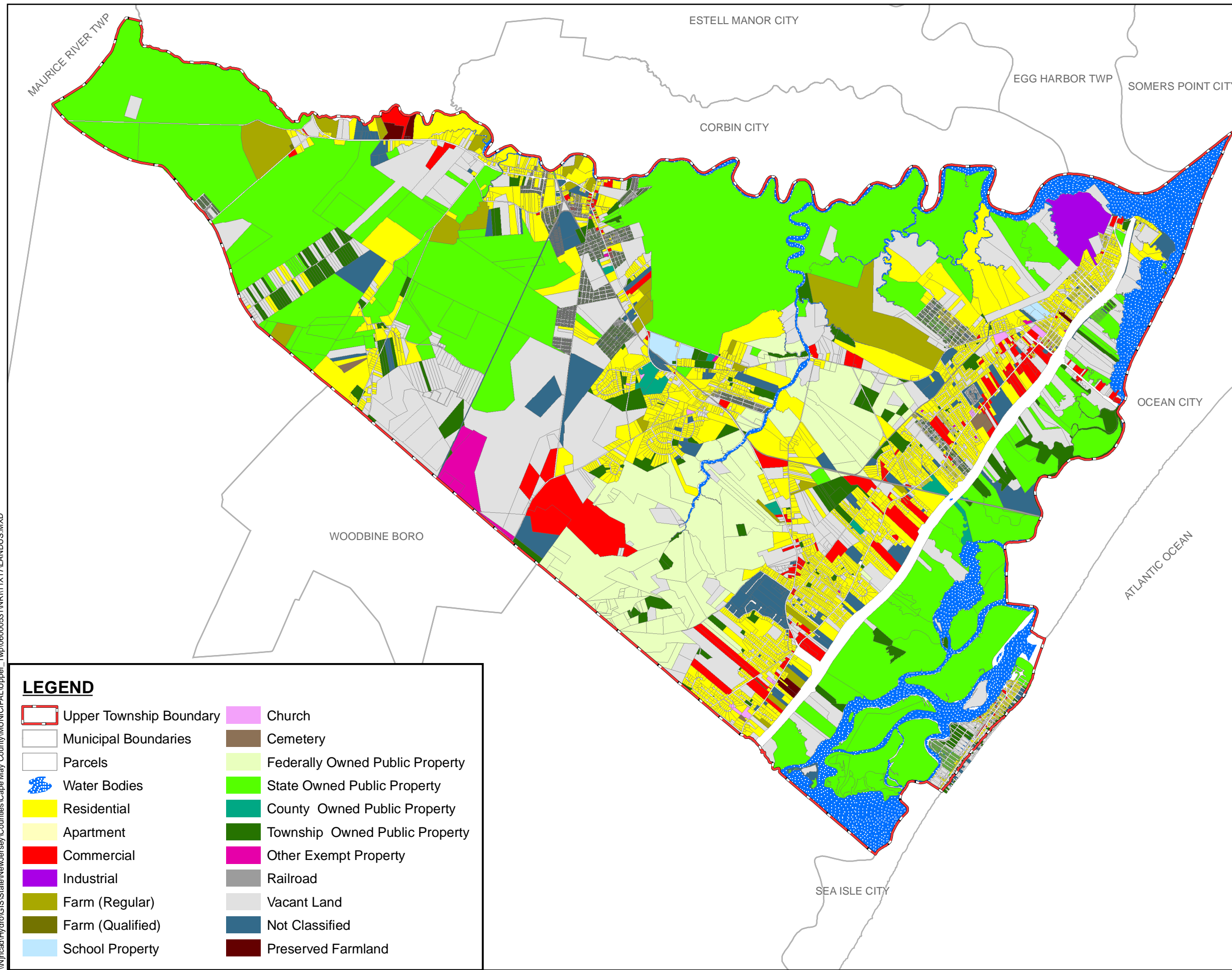


FIGURE 2

## LAND USE MAP

TOWNSHIP OF UPPER

CAPE MAY COUNTY, NEW JERSEY

SEPTEMBER 2006



2,500 0 2,500 5,000 7,500 10,000  
Feet

1 inch equals 6,500 feet

### LEGEND

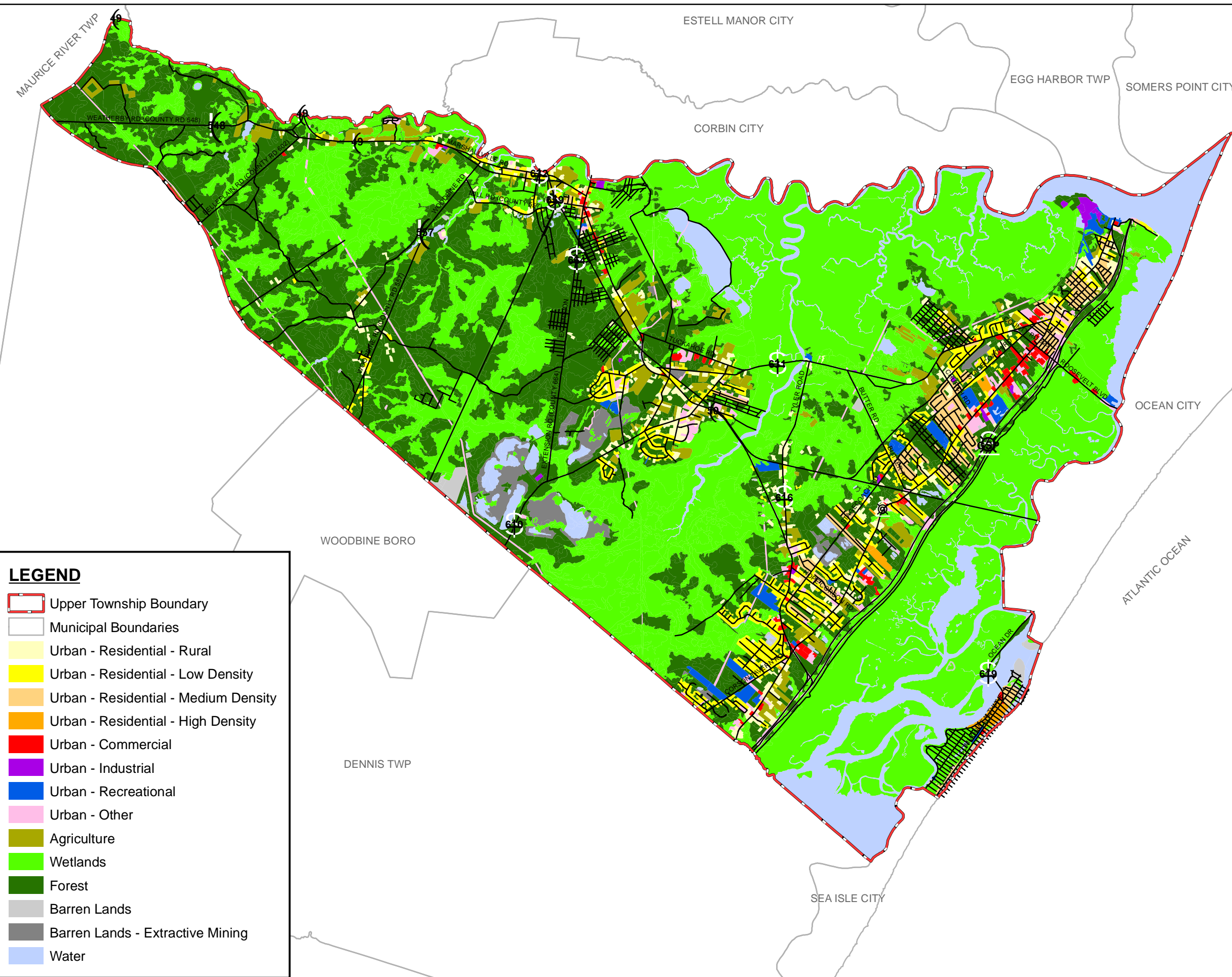
Upper Township Boundary	Church
Municipal Boundaries	Cemetery
Parcels	Federally Owned Public Property
Water Bodies	State Owned Public Property
Residential	County Owned Public Property
Apartment	Township Owned Public Property
Commercial	Other Exempt Property
Industrial	Railroad
Farm (Regular)	Vacant Land
Farm (Qualified)	Not Classified
School Property	Preserved Farmland

#### DIGITAL SPATIAL DATA SOURCES:

- CAPE MAY COUNTY GEOGRAPHIC INFORMATION SYSTEM  
- NEW JERSEY DEPARTMENT OF COMMUNITY AFFAIRS, OFFICE OF SMART GROWTH  
- NEW JERSEY DEPARTMENT OF ENVIRONMENTAL PROTECTION, BUREAU OF GEOGRAPHIC INFORMATION  
- UNITED STATES DEPARTMENT OF AGRICULTURE, NATURAL RESOURCES CONSERVATION SERVICES  
- NEW JERSEY OFFICE OF INFORMATION TECHNOLOGY, OFFICE OF GIS



\\njcad\Hydro\GIS\State\NewJersey\Counties\Cape May County\MUNICIPAL\Upper\_Twp\06000531\NR11X17\LULC.MXD



### LEGEND

- Upper Township Boundary
- Municipal Boundaries
- Urban - Residential - Rural
- Urban - Residential - Low Density
- Urban - Residential - Medium Density
- Urban - Residential - High Density
- Urban - Commercial
- Urban - Industrial
- Urban - Recreational
- Urban - Other
- Agriculture
- Wetlands
- Forest
- Barren Lands
- Barren Lands - Extractive Mining
- Water

FIGURE 3

## 1995 LANDUSE/ LANDCOVER MAP

TOWNSHIP OF UPPER

CAPE MAY COUNTY, NEW JERSEY

SEPTEMBER 2006



2,500 0 2,500 5,000 7,500 10,000  
Feet

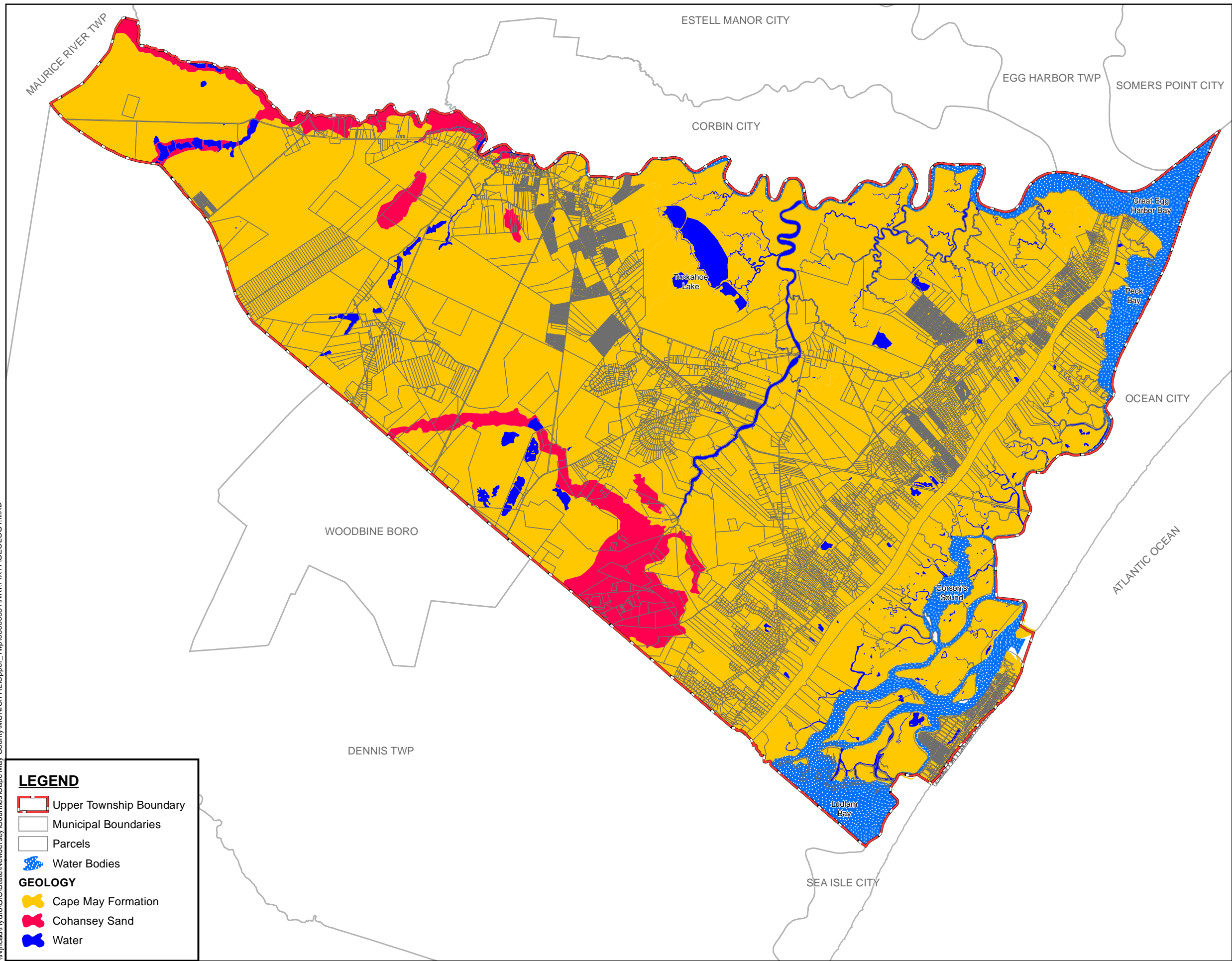
1 inch equals 6,500 feet

DIGITAL SPATIAL DATA SOURCES:  
- CAPE MAY COUNTY GEOGRAPHIC INFORMATION SYSTEM  
- NEW JERSEY DEPARTMENT OF COMMUNITY AFFAIRS, OFFICE OF SMART GROWTH  
- NEW JERSEY DEPARTMENT OF ENVIRONMENTAL PROTECTION, BUREAU OF GEOGRAPHIC INFORMATION  
- UNITED STATES DEPARTMENT OF AGRICULTURE, NATURAL RESOURCES CONSERVATION SERVICES  
- NEW JERSEY OFFICE OF INFORMATION TECHNOLOGY, OFFICE OF GIS





\\njcad\Hydro\GIS\State\NewJersey\Counties\Cape May County\MUNICIPAL\Upper\_Twp\06000531\NR111X17GEOLOGY.MXD



#### LEGEND

- Upper Township Boundary
- Municipal Boundaries
- Parcels
- Water Bodies

#### GEOLOGY

- Cape May Formation
- Cohansey Sand
- Water

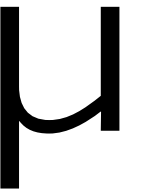
FIGURE 4

## GEOLOGY MAP

TOWNSHIP OF UPPER

CAPE MAY COUNTY, NEW JERSEY

SEPTEMBER 2006



2,500 0 2,500 5,000 7,500 10,000  
Feet

1 inch equals 6,500 feet

#### DIGITAL SPATIAL DATA SOURCES:

- CAPE MAY COUNTY GEOGRAPHIC INFORMATION SYSTEM
- NEW JERSEY DEPARTMENT OF COMMUNITY AFFAIRS, OFFICE OF SMART GROWTH
- NEW JERSEY DEPARTMENT OF ENVIRONMENTAL PROTECTION, BUREAU OF GEOGRAPHIC INFORMATION
- UNITED STATES DEPARTMENT OF AGRICULTURE, NATURAL RESOURCES CONSERVATION SERVICES
- NEW JERSEY OFFICE OF INFORMATION TECHNOLOGY, OFFICE OF GIS





\\njcad\Hydro\GIS\State\NewJersey\Counties\Cape May County\MUNICIPAL\Upper\_Twp\06000531\NR111X17\SOILS.MXD

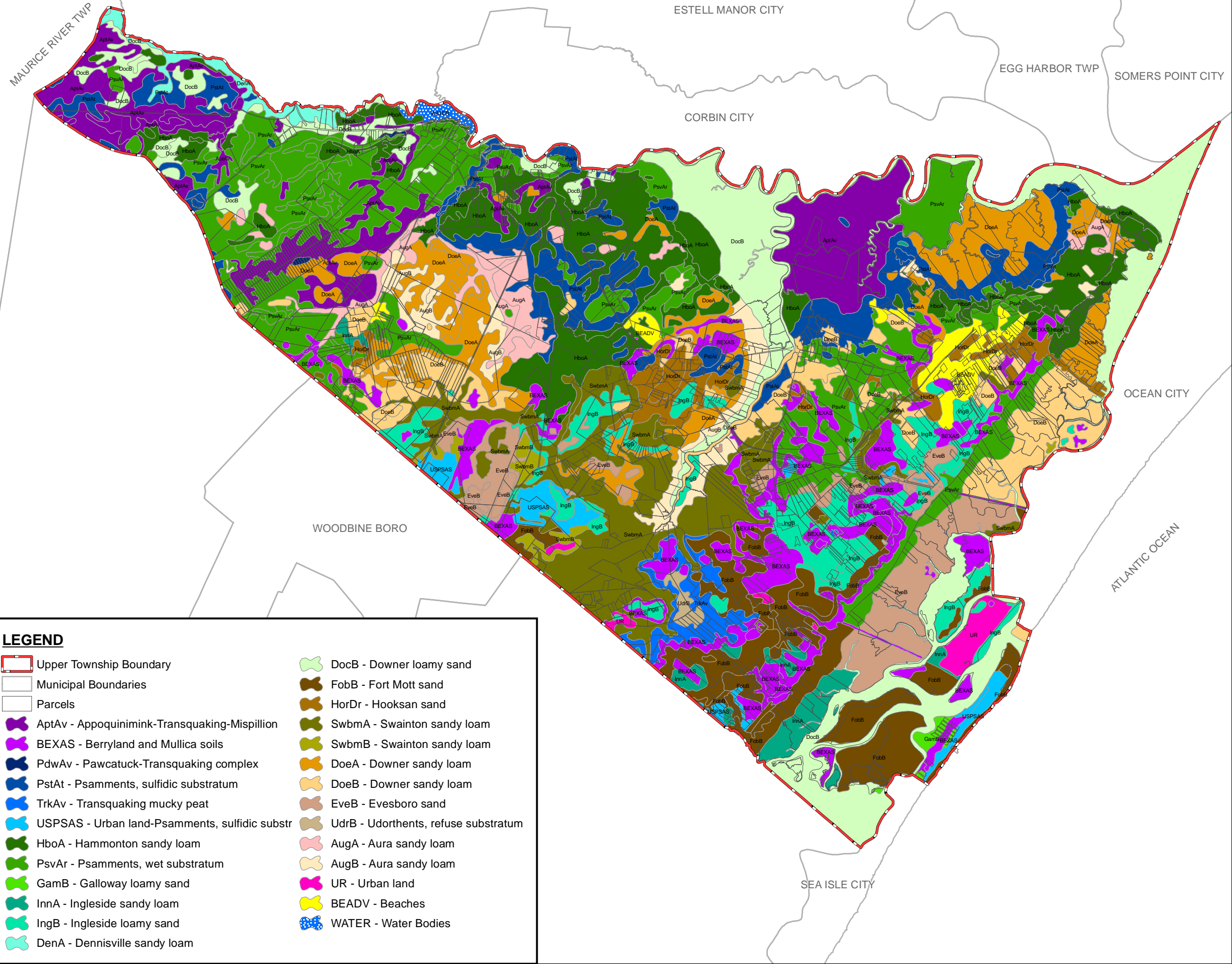


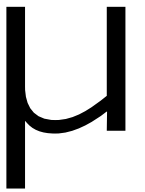
FIGURE 5

## SOILS MAP

TOWNSHIP OF UPPER

CAPE MAY COUNTY, NEW JERSEY

SEPTEMBER 2006



2,500 0 2,500 5,000 7,500 10,000  
Feet

1 inch equals 6,500 feet

DIGITAL SPATIAL DATA SOURCES:

- CAPE MAY COUNTY GEOGRAPHIC INFORMATION SYSTEM
- NEW JERSEY DEPARTMENT OF COMMUNITY AFFAIRS, OFFICE OF SMART GROWTH
- NEW JERSEY DEPARTMENT OF ENVIRONMENTAL PROTECTION, BUREAU OF GEOGRAPHIC INFORMATION
- UNITED STATES DEPARTMENT OF AGRICULTURE, NATURAL RESOURCES CONSERVATION SERVICES
- NEW JERSEY OFFICE OF INFORMATION TECHNOLOGY, OFFICE OF GIS





\\njcad\Hydro\GIS\State\NewJersey\Counties\Cape May County\MUNICIPAL\Upper\_Twp\06000531\NR111X17\CONTAM.MXD

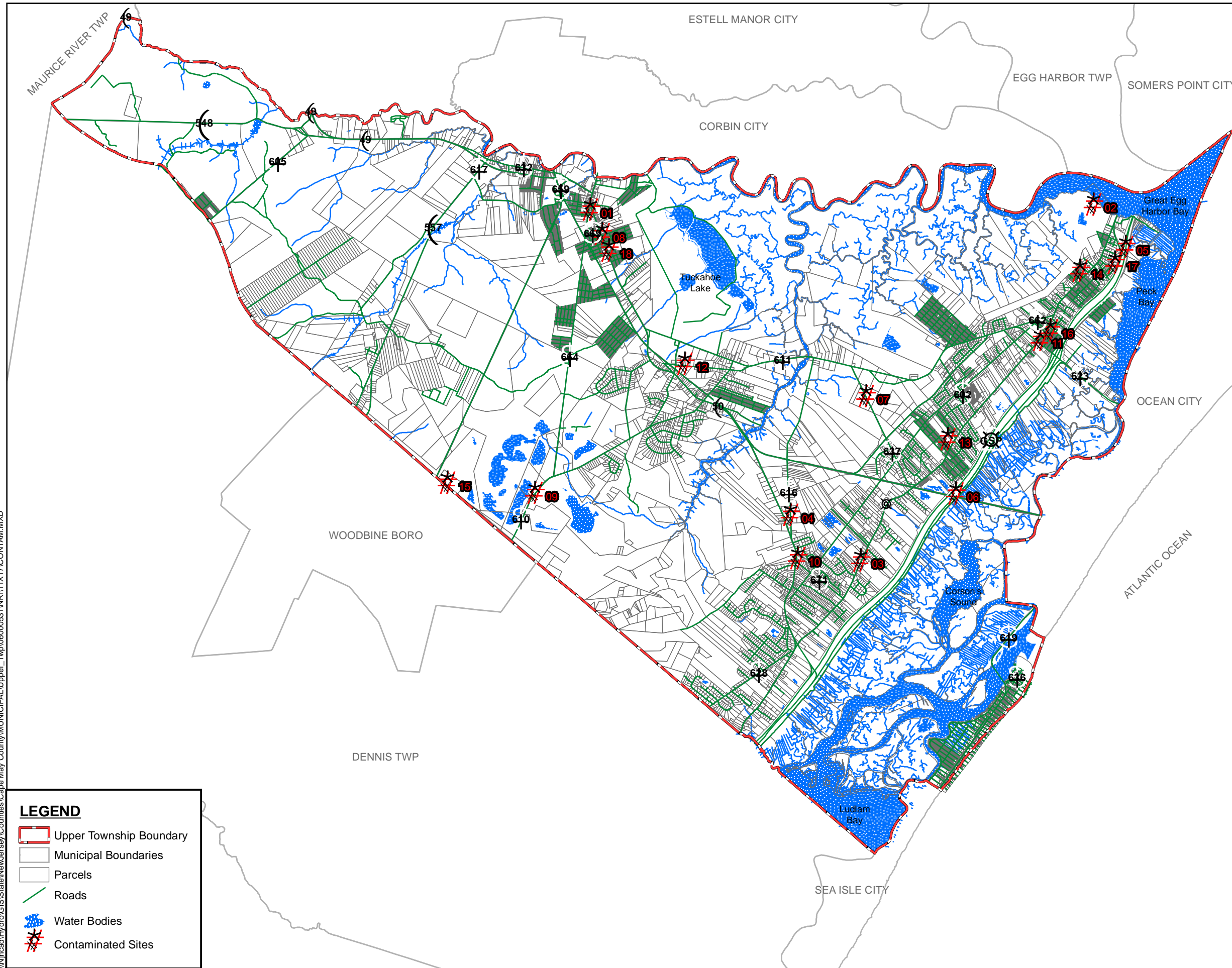


FIGURE 6

## CONTAMINATED SITES MAP

TOWNSHIP OF UPPER

CAPE MAY COUNTY, NEW JERSEY

SEPTEMBER 2006



2,500 0 2,500 5,000 7,500 10,000  
Feet

1 inch equals 6,500 feet

### DIGITAL SPATIAL DATA SOURCES:

- CAPE MAY COUNTY GEOGRAPHIC INFORMATION SYSTEM
- NEW JERSEY DEPARTMENT OF COMMUNITY AFFAIRS, OFFICE OF SMART GROWTH
- NEW JERSEY DEPARTMENT OF ENVIRONMENTAL PROTECTION, BUREAU OF GEOGRAPHIC INFORMATION
- UNITED STATES DEPARTMENT OF AGRICULTURE, NATURAL RESOURCES CONSERVATION SERVICES
- NEW JERSEY OFFICE OF INFORMATION TECHNOLOGY, OFFICE OF GIS





\\njncad\Hydro\GIS\State\NewJersey\Cape May County\MUNICIPAL\Upper\_Twp\060000531\NR111X17\WATERRESOURCES.MXD

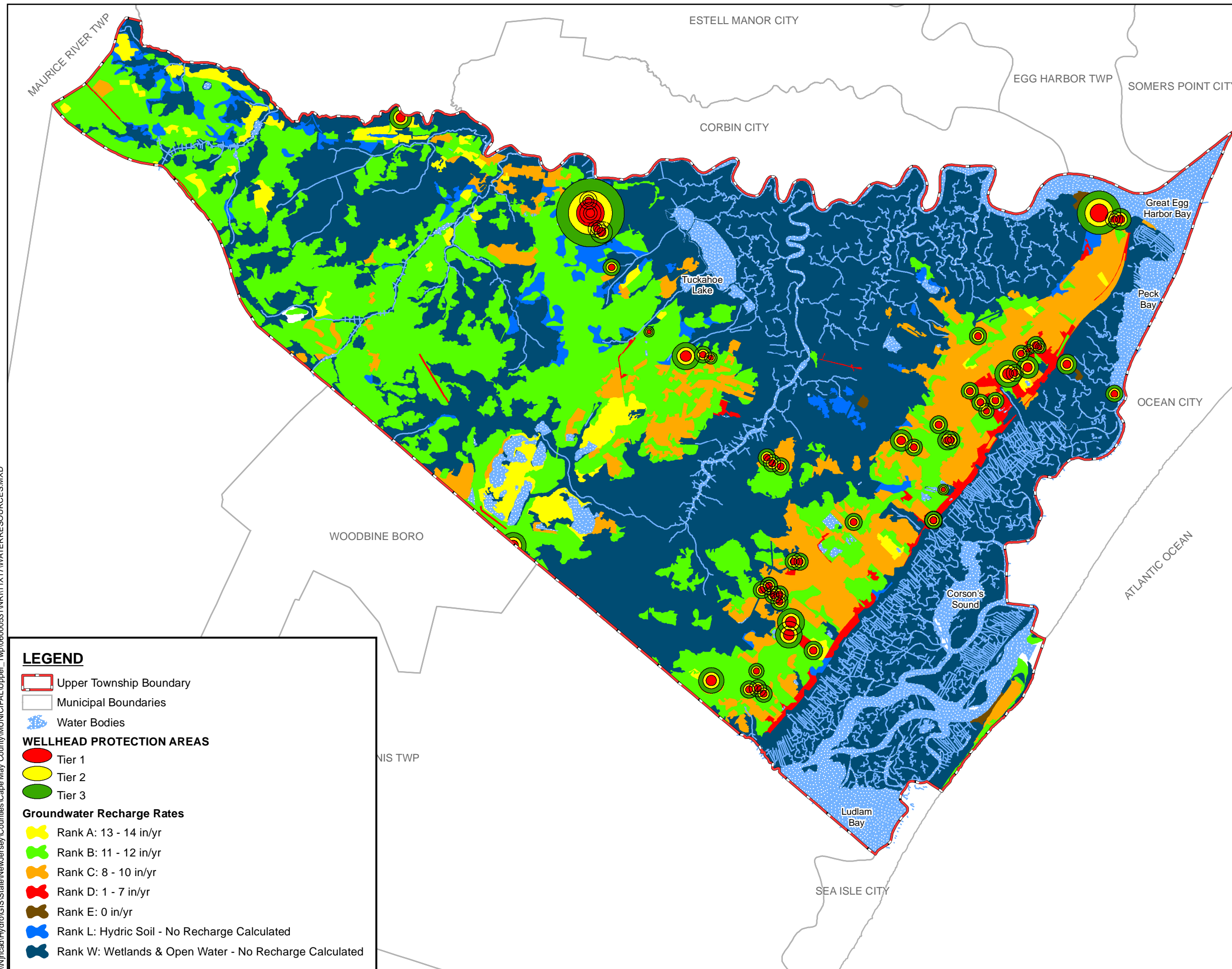


FIGURE 7

## WATER RESOURCES MAP

TOWNSHIP OF UPPER

CAPE MAY COUNTY, NEW JERSEY

SEPTEMBER 2006



2,500 0 2,500 5,000 7,500 10,000  
Feet

1 inch equals 6,500 feet

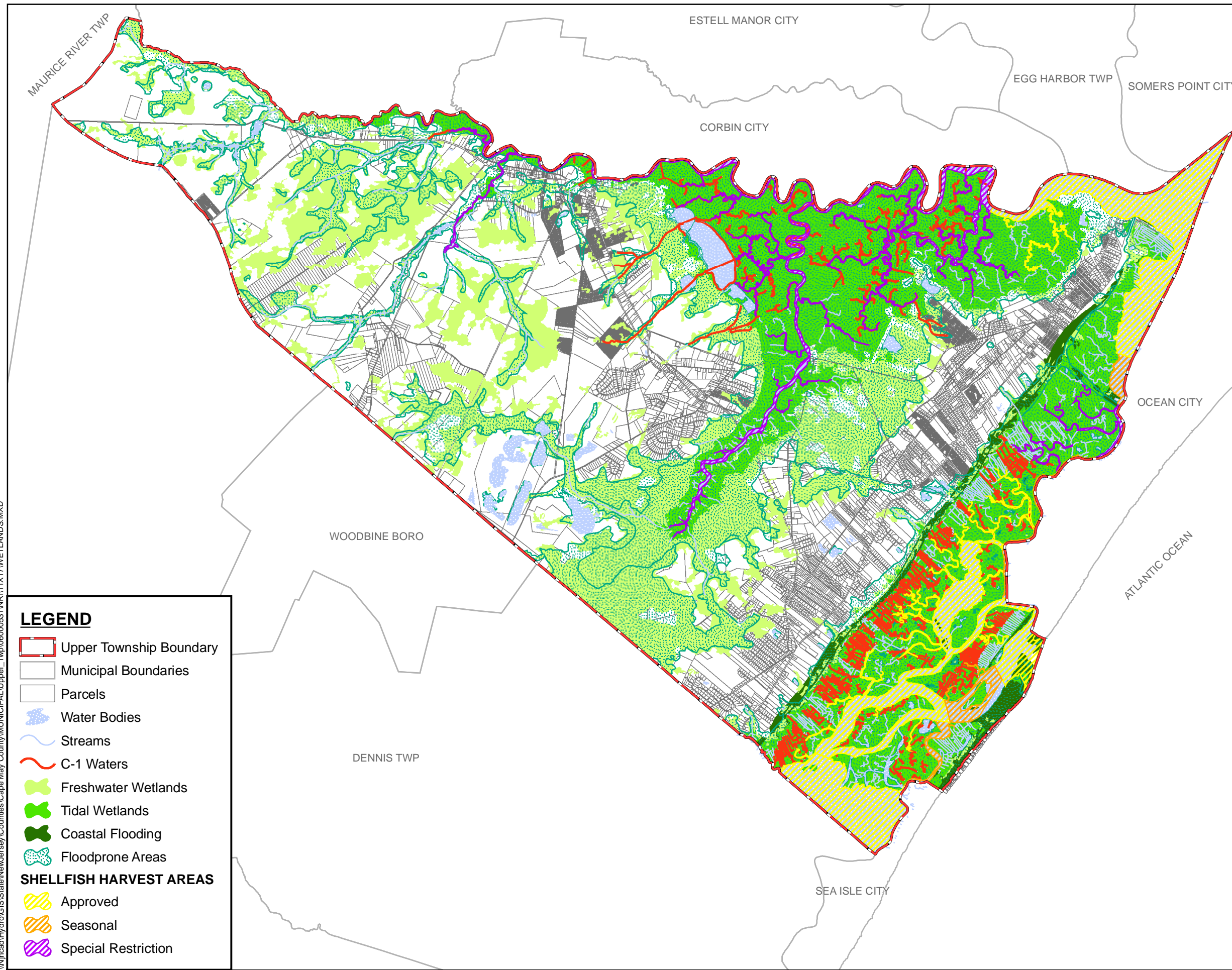
### DIGITAL SPATIAL DATA SOURCES:

- CAPE MAY COUNTY GEOGRAPHIC INFORMATION SYSTEM
- NEW JERSEY DEPARTMENT OF COMMUNITY AFFAIRS, OFFICE OF SMART GROWTH
- NEW JERSEY DEPARTMENT OF ENVIRONMENTAL PROTECTION, BUREAU OF GEOGRAPHIC INFORMATION
- UNITED STATES DEPARTMENT OF AGRICULTURE, NATURAL RESOURCES CONSERVATION SERVICES
- NEW JERSEY OFFICE OF INFORMATION TECHNOLOGY, OFFICE OF GIS





\\njcad\Hydro\GIS\State\NewJersey\Counties\Cape May County\MUNICIPAL\Upper\_Twp\06000531\NR11\1X17\WETLANDS.MXD



### LEGEND

- Upper Township Boundary
- Municipal Boundaries
- Parcels
- Water Bodies
- Streams
- C-1 Waters
- Freshwater Wetlands
- Tidal Wetlands
- Coastal Flooding
- Floodprone Areas
- SHELLFISH HARVEST AREAS**
  - Approved
  - Seasonal
  - Special Restriction

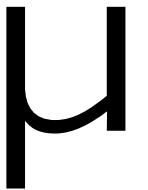
FIGURE 8

## WETLANDS MAP

TOWNSHIP OF UPPER

CAPE MAY COUNTY, NEW JERSEY

SEPTEMBER 2006



2,500 0 2,500 5,000 7,500 10,000  
Feet

1 inch equals 6,500 feet

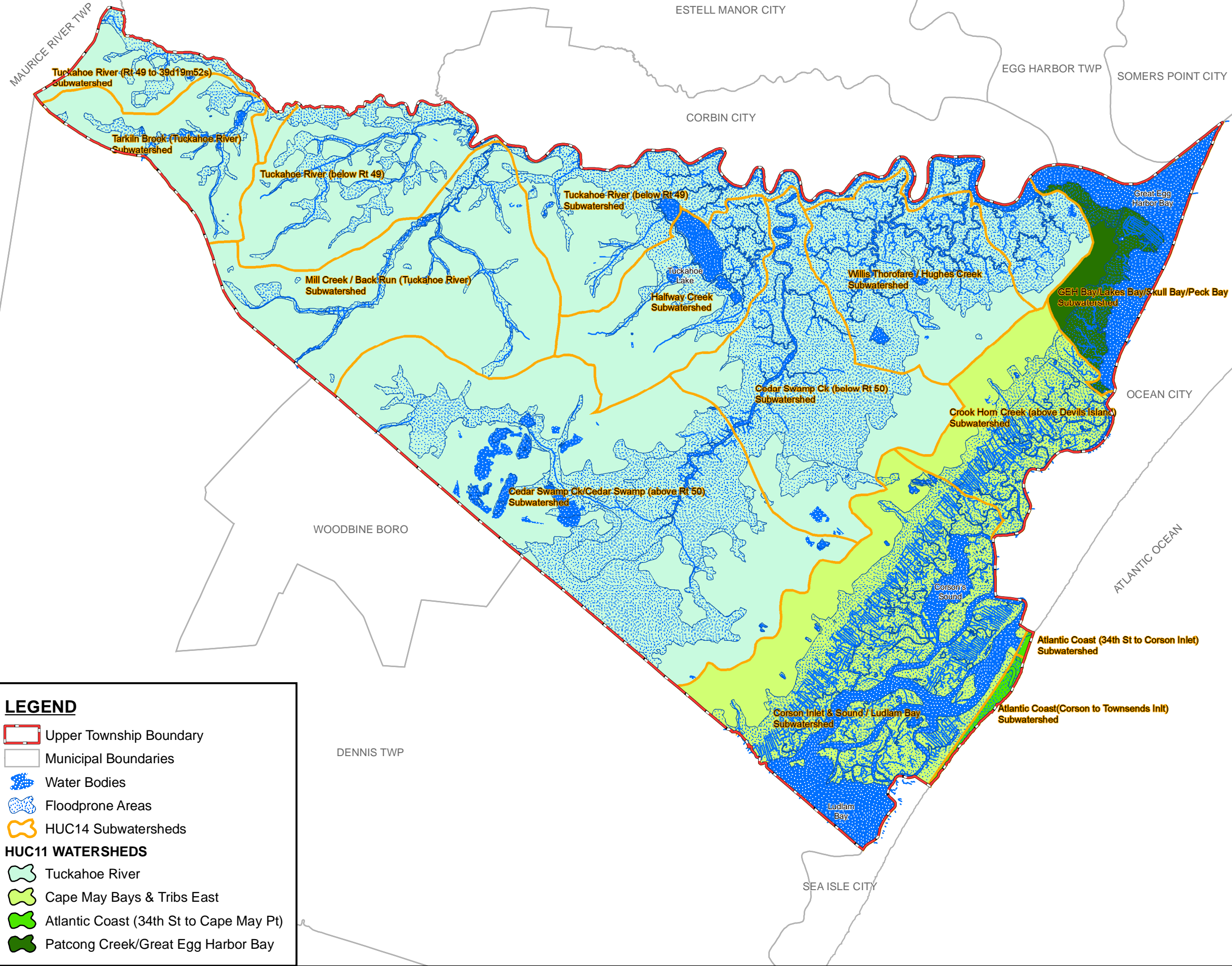
#### DIGITAL SPATIAL DATA SOURCES:

- CAPE MAY COUNTY GEOGRAPHIC INFORMATION SYSTEM
- NEW JERSEY DEPARTMENT OF COMMUNITY AFFAIRS, OFFICE OF SMART GROWTH
- NEW JERSEY DEPARTMENT OF ENVIRONMENTAL PROTECTION, BUREAU OF GEOGRAPHIC INFORMATION
- UNITED STATES DEPARTMENT OF AGRICULTURE, NATURAL RESOURCES CONSERVATION SERVICES
- NEW JERSEY OFFICE OF INFORMATION TECHNOLOGY, OFFICE OF GIS





\\njcad\Hydro\GIS\State\NewJersey\Counties\Cape May County\MUNICIPAL\Upper\_Twp\06000531\NR111X17\WATERSHED.MXD



### LEGEND

- Upper Township Boundary
- Municipal Boundaries
- Water Bodies
- Floodprone Areas
- HUC14 Subwatersheds

### HUC11 WATERSHEDS

- Tuckahoe River
- Cape May Bays & Tribs East
- Atlantic Coast (34th St to Cape May Pt)
- Patcong Creek/Great Egg Harbor Bay

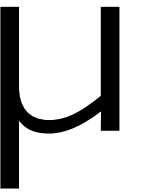
FIGURE 9

## WATERSHED MAP

TOWNSHIP OF UPPER

CAPE MAY COUNTY, NEW JERSEY

SEPTEMBER 2006



2,500 0 2,500 5,000 7,500 10,000 Feet

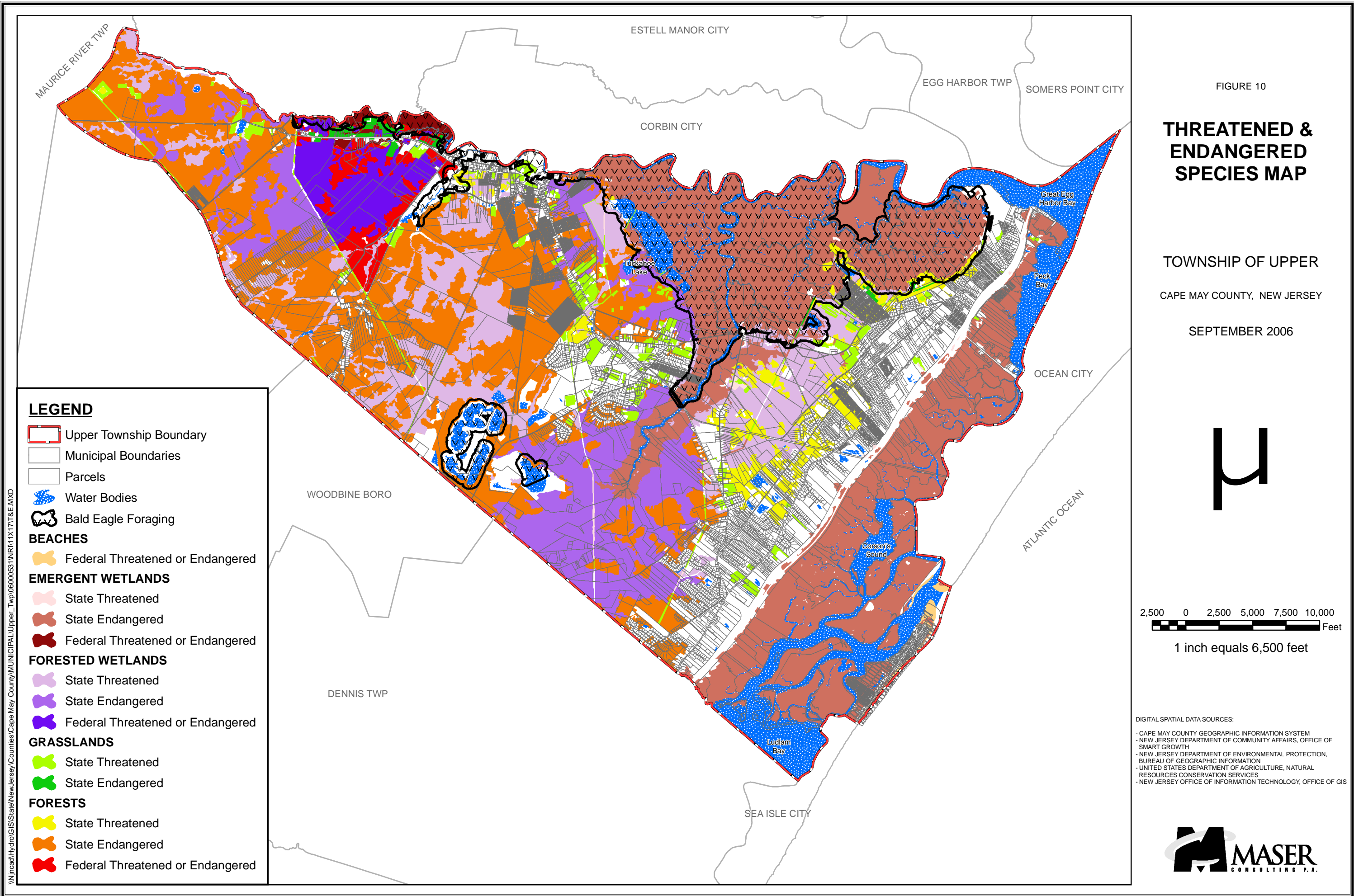
1 inch equals 6,500 feet

### DIGITAL SPATIAL DATA SOURCES:

- CAPE MAY COUNTY GEOGRAPHIC INFORMATION SYSTEM
- NEW JERSEY DEPARTMENT OF COMMUNITY AFFAIRS, OFFICE OF SMART GROWTH
- NEW JERSEY DEPARTMENT OF ENVIRONMENTAL PROTECTION, BUREAU OF GEOGRAPHIC INFORMATION
- UNITED STATES DEPARTMENT OF AGRICULTURE, NATURAL RESOURCES CONSERVATION SERVICES
- NEW JERSEY OFFICE OF INFORMATION TECHNOLOGY, OFFICE OF GIS

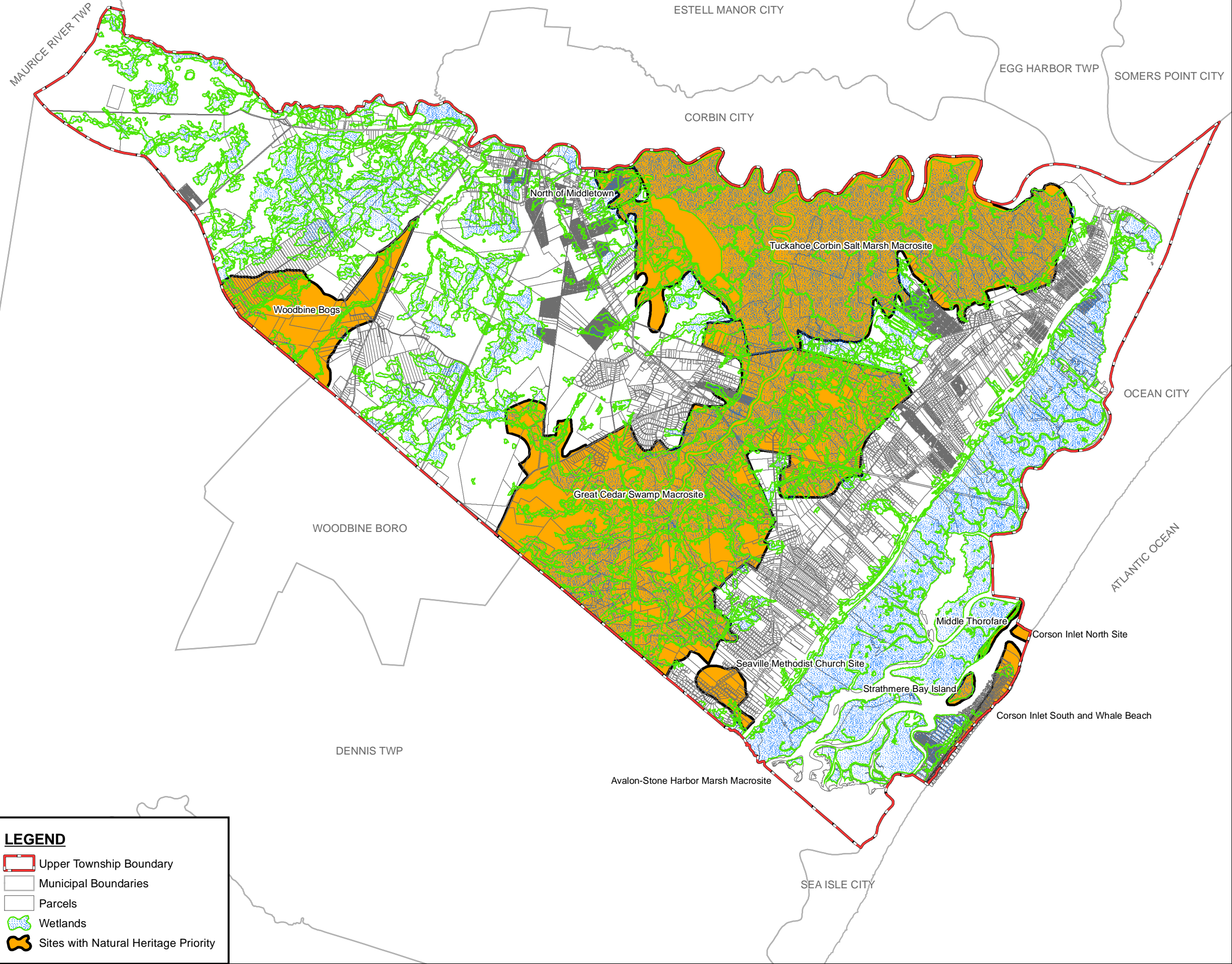








\\njcad\Hydro\GIS\State\NewJersey\Counties\Cape May County\MUNICIPAL\Upper\_Twp\060000531\NR111X17\NATURAL-HERITAGE.MXD



#### LEGEND

- Upper Township Boundary
- Municipal Boundaries
- Parcels
- Wetlands
- Sites with Natural Heritage Priority

FIGURE 11

## NATURAL HERITAGE PRIORITY MAP

TOWNSHIP OF UPPER  
CAPE MAY COUNTY, NEW JERSEY

SEPTEMBER 2006



2,500 0 2,500 5,000 7,500 10,000  
Feet

1 inch equals 6,500 feet

DIGITAL SPATIAL DATA SOURCES:  
- CAPE MAY COUNTY GEOGRAPHIC INFORMATION SYSTEM  
- NEW JERSEY DEPARTMENT OF COMMUNITY AFFAIRS, OFFICE OF SMART GROWTH  
- NEW JERSEY DEPARTMENT OF ENVIRONMENTAL PROTECTION, BUREAU OF GEOGRAPHIC INFORMATION  
- UNITED STATES DEPARTMENT OF AGRICULTURE, NATURAL RESOURCES CONSERVATION SERVICES  
- NEW JERSEY OFFICE OF INFORMATION TECHNOLOGY, OFFICE OF GIS





\\njcad\Hydro\GIS\State\NewJersey\Counties\Cape May County\MUNICIPAL\Upper\_Twp\060000531\NR111X17\HISTORIC.MXD

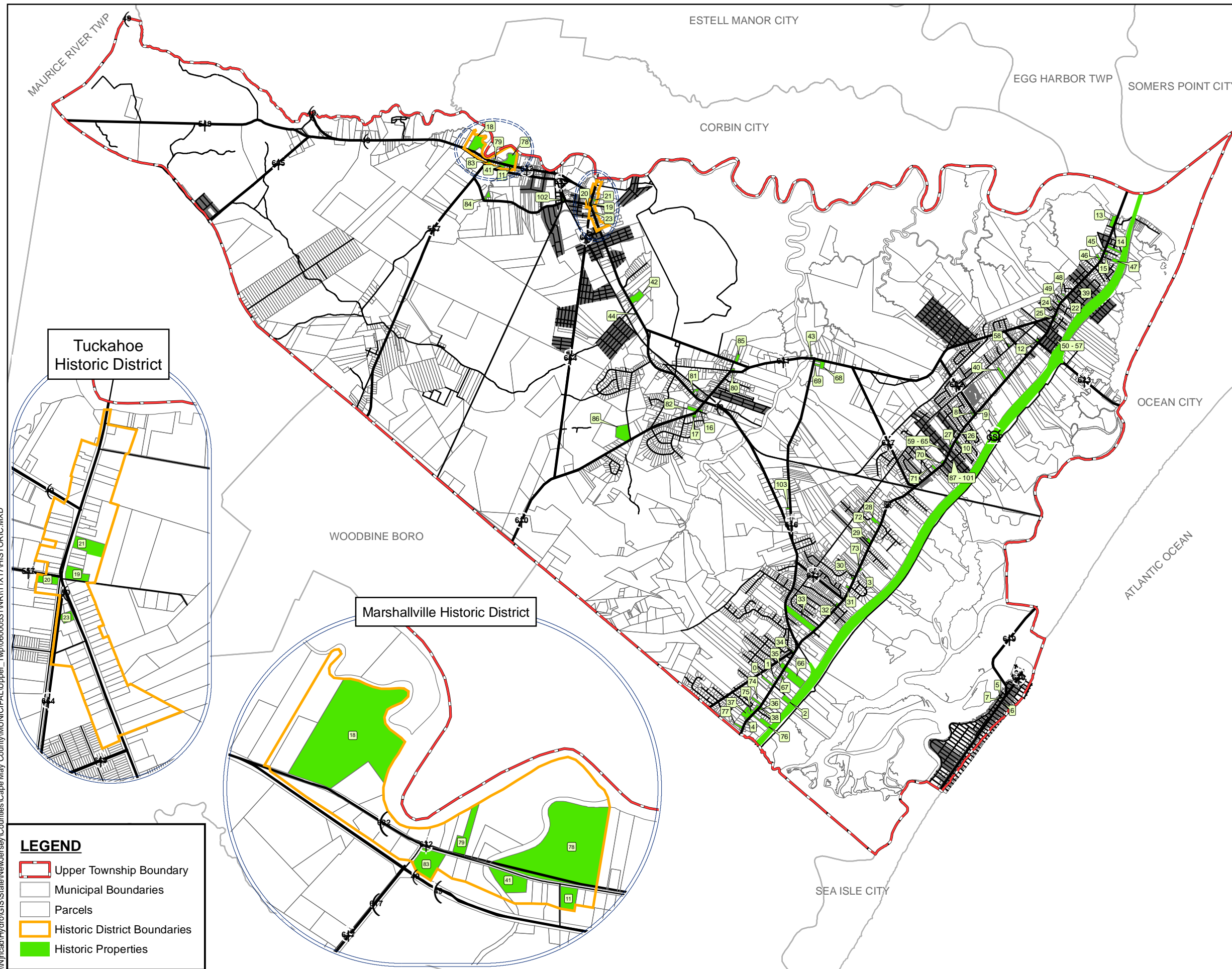


FIGURE 12

## HISTORICAL PROPERTIES MAP

TOWNSHIP OF UPPER

CAPE MAY COUNTY, NEW JERSEY

SEPTEMBER 2006



2,500 0 2,500 5,000 7,500 10,000  
Feet

1 inch equals 6,500 feet

DIGITAL SPATIAL DATA SOURCES:

- CAPE MAY COUNTY GEOGRAPHIC INFORMATION SYSTEM
- NEW JERSEY DEPARTMENT OF COMMUNITY AFFAIRS, OFFICE OF SMART GROWTH
- NEW JERSEY DEPARTMENT OF ENVIRONMENTAL PROTECTION, BUREAU OF GEOGRAPHIC INFORMATION
- UNITED STATES DEPARTMENT OF AGRICULTURE, NATURAL RESOURCES CONSERVATION SERVICES
- NEW JERSEY OFFICE OF INFORMATION TECHNOLOGY, OFFICE OF GIS





\\njcad\Hydro\GIS\State\NewJersey\Counties\Cape May County\MUNICIPAL\Upper\_Twp\06000531\NR111X17\OPENSPACE.MXD

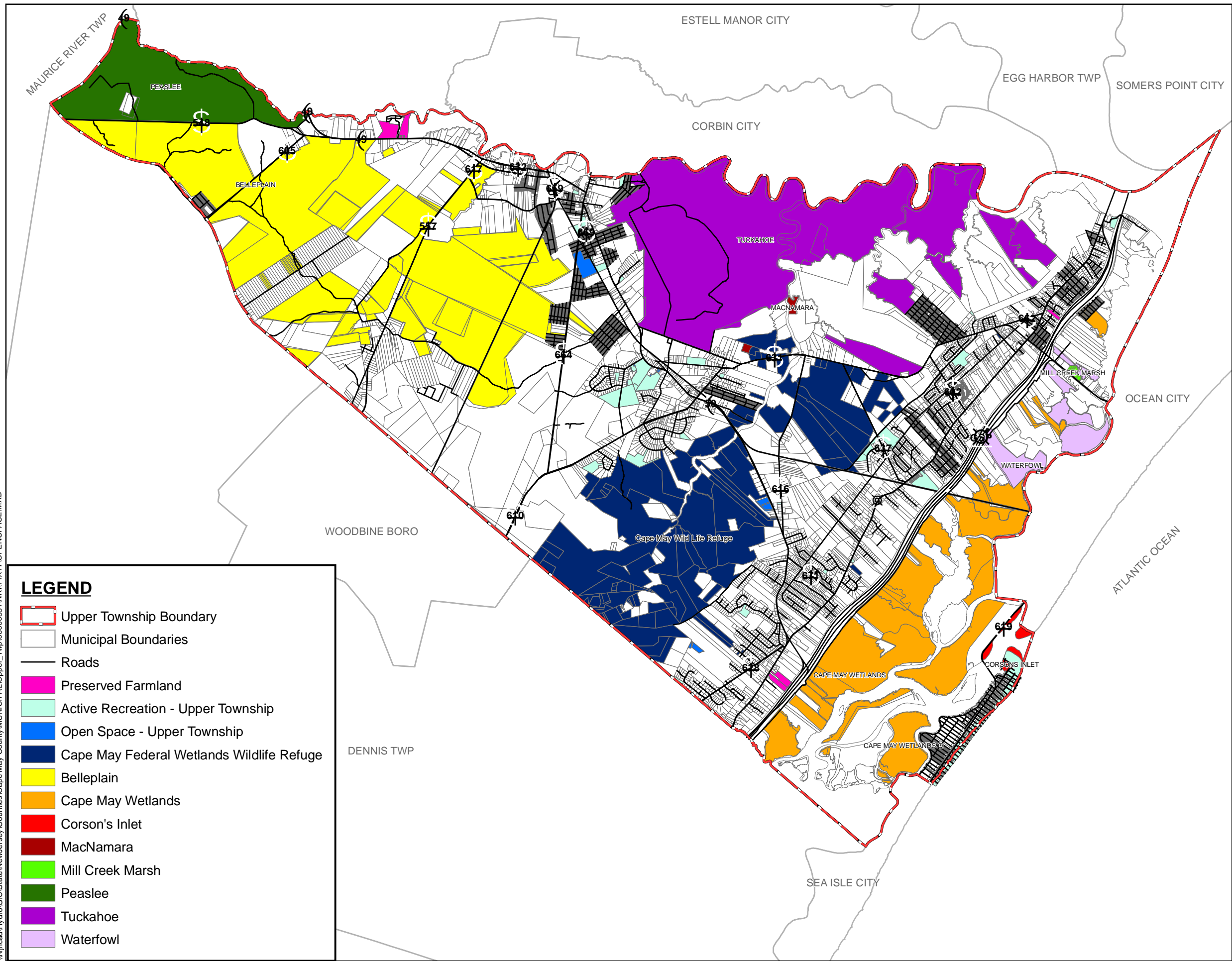


FIGURE 13

OPEN SPACE MAP

TOWNSHIP OF UPPER

CAPE MAY COUNTY, NEW JERSEY

SEPTEMBER 2006